

- ▶ YOU ARE SO BEAUTIFUL ..... 1
- ▶ VETERINARY ACUPUNCTURE: INDICATION & CONTRAINDICATION 1
- ▶ CASE REPORT: TCVM THERAPIES CURE A CRYPTORCHID PUPPY..... 2
- ▶ NEWS OF THE CHI INSTITUTE ..... 4
- ▶ TCVM DIAGNOSTICS, CLASSICAL POINTS AND ADVANCED ACUPUNCTURE TECHNIQUES ..... 5
- ▶ NEW JING TANG FORMULAS ARE AVAILABLE IN TEAPILLS ..... 6
- ▶ JING TANG FORMULA IN USE ..... 6
- ▶ ITINERARY OF POST-CONFERENCE TOUR IN CHINA ..... 7
- ▶ NEW PROGRAM: FOOD THERAPY ... 7
- ▶ LETTER FROM BARBARA ..... 8

○ ISSUE 6 ○ 2005

# Chi Institute of Chinese Medicine

Tel: 800-891-1986

Website: [www.tcvm.com](http://www.tcvm.com)

Email: [barbara@tcvm.com](mailto:barbara@tcvm.com)

# TCVM News

CHI INSTITUTE, A LEADING VETERINARY C.E. PROVIDER THAT TEACHES ACUPUNCTURE, CHINESE HERBAL MEDICINE, TUI-NA, FOOD THERAPY AND OTHER TRADITIONAL CHINESE VETERINARY MEDICINE SKILLS.

*I am always amazed to find so much versatility and variety among our Chi students. They are a tribute to the phrase "multi-talented".*

## To borrow words from a favorite song ... "You are so beautiful, to me"!

— by Barbara Lowell, Student Administrator of Chi

For instance, we have one recent student who in a previous life was a CPA!! Another was a music teacher and is still a performing musician. We have one who makes beautiful beaded jewelry, one who acts in community theatre, and yet another who knits professionally and shows her work in galleries.

There are new young mothers and grandmothers, all of whom spend much time with children and grandchildren. There

are artists, authors, editors, carpenters and chefs. There are several human acupuncturists as well. An upcoming new addition to our small animal class is not only a biker, but his whole staff are bikers! What an interesting, heterogeneous group we have here.

I am honored and delighted as I get to know each of you for the treasure that you are, for your open minds and for

*(Continued on page 2)*



**Kim Danoff, DVM, CVA with her buddy, Charles**

*(Chi Institute Herbology Class 2005 Student)*



## Veterinary Acupuncture: Indication and Contraindication

— by Shen Xie, DVM Ph.D.

Veterinary Acupuncture has been practiced in China for at least 2,000 years.<sup>1</sup> Interest and activity spread to other Asian countries including Japan and Korean about 1,500 years ago.<sup>2</sup> During the past 30 years there has been tremendous growth and development of Veterinary Acupuncture in Europe and the United States. Acupuncture has been used for treatment of diseases in horses, cattle, dogs, cats, and birds. The results of many clinical studies have documented the benefits provided to acu-

*(Continued on page 3)*



## Case Report: TCVM therapies cure a cryptorchid puppy

- Shura Bugreeff DVM

As well as being a veterinarian, I also selectively breed Rhodesian Ridgebacks. I imported my second dog from Africa after my first dog died at the age of four from two separate genetic diseases. I have bred three litters to date the last was born 1/15/05. In this litter I had one male that had not descended one testicle by the age of four months. The owners were concerned, as was I, since this dog had a show career in his future.

At four months of age I began the 50 lb. puppy on Epimedium Powder at a dose of 0.5g per 10lb of body weight BID. I also had the owners apply acupuncture points BL- 23/26/24/28, CV 4/6, BL- 39, SP-6 and gb-34.

After one month of treatment the wife called me to report that she thought she could see a small testicle. By the second month of treatment the testicle was definitely evident and down in its correct position.

Although Dr. Xie warned us that the success rate was only 50 to 60% this regime did work in this particular case.

Since my practice deals primarily with reproductive medicine, I am extremely pleased that I now have TCVM to help when Western medicine has no answers.

*(Dr. Bugreeff is one of students in Chi Institute West Coast Chinese Veterinary Herbalogy Seminar 2005)*

## To borrow words from a favorite song ... "You are so beautiful, to me"!

— by Barbara Lowell

*(Continued from page 1)*

your open hearts, and for your dedication to making this a better world.

So in this issue, I would like to tell you about one of our herbal students, Dr. Kim Danoff of Vienna, Va. Every time I speak to this lady, she is running off somewhere, either adding to her immense skills, aiding in some unique animal rescue project, or sorting out the complexities of either a wing-ed, two, or four legged friend who has an out of the ordinary problem. Kim donates much time and energy to relieving the pain and misery of animals and their owners and it has been my privilege to get to know her, for I support all her endeavors with all my heart.

When Kim comes to our herbal classes, she is usually accompanied by several animals she hopes will find some help in our Friday afternoon lab.. She has even left with one of our very sick lab animals, taking them back to Virginia in an effort to try to get them well. She works with many alternative methods including our Jing Tang Herbal products, and she is a passionate voice for animals in need.

I want to tell you about what she is up to, for it has touched all our hearts. Her latest project was to assemble and personally deliver veterinary aid, comfort and resources to the abandoned animal victims of the Katrina catastrophe. She started by sending out a request through her network for donations of transportation, supplies, and financial aid. Within 48 hours, she received \$12,000 and offers of several jets and two cargo vans to transport animals, horse trailers, blankets, paper towels, food, toys, water. She, with 2 other veterinarians, a vet tech and 6 volunteers decided to save the jets for another time, and load all the supplies into the vehicles and drive to Mississippi. When they found



that they couldn't tow the horse trailer which was also fully packed with supplies, a total stranger came forward and offered Kim the keys to her Ford Expo and horse trailer to use as she needed. So, they all went off to Mississippi to locate and rescue animals in distress.

They set up camp in front of Petsmart, with tents and generators to supply air conditioning, and canvassed the area door to door, sometimes leaving supplies behind, and sometimes leaving their business card to advise where the rescued animal could be retrieved when things settled down. After several days, they came back to Virginia with 60-70 birds, cats, dogs, bunnies and numerous kittens, all of which have since been given exams and medical care, administered by a volunteer staff supporting this project.

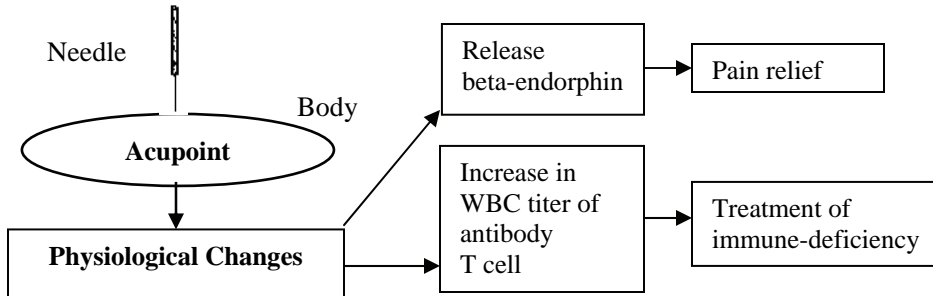
If you would like to know more about her rescue mission and get to know her as well, or just be inspired by her wonderful website, please visit her at [www.vetrehab.org](http://www.vetrehab.org) and don't be surprised if someday we tell your own unique story (with your permission, of course)!

美麗

Beautiful

# Veterinary Acupuncture: Indication and Contraindication

— by Shen Xie, DVM PhD



(Continued from page 1)

puncture patients.<sup>3,4,5,6</sup> Acupuncture clinical results vary according to the disorder being treated and with the type of acupuncture technique employed. Thus, the goal of this paper is to highlight the indications and caution the contraindications in Veterinary Acupuncture.

## What is Acupuncture: Acupuncture Model

Acupuncture may be defined as the stimulation of a specific point on the body referred to as an “acupoint”. Physiological changes in response to acupuncture point stimulation is the basis of clinical treatment. Some of these include release of endogenous opioids, immune system stimulation, blood pressure regulation, and body temperature regulation. Thus, many techniques have been developed to stimulate “acupoints” such as: dry-needle, moxibustion, electro-acupuncture, aqua-acupuncture, hemo-acupuncture, acu-pressure and pneumo-acupuncture.

## Applications in Veterinary Acupuncture

Acupuncture can be used for a variety of clinical conditions, especially chronic diseases. The following are three areas in which acupuncture is most commonly used: 1) pain management; 2) geriatric medicine; 3) sports medicine.

### 1. Acupuncture pain management.

Acupuncture has been reported to be effective for treatment of various pain producing conditions including cervical, thoracolumbar and lumbo-sacral hyperpathia; chronic lameness, degenerative joint diseases, and colic<sup>2-7</sup>. Acupuncture stimulation has been found to produce an analgesic effect, generally called acupuncture analgesia (AA).<sup>8</sup> The release of beta-endorphin may be one of the pathways in which acupuncture relieves pain.<sup>9-10</sup> The UCLA acupuncture research project found that different types of acupuncture were effective for pain relief of various orthopedic, obstetric and surgical procedures, treatment of chronic pain, sensorineural hearing loss, compulsive disorders such as obesity and tobacco and drug addiction, and bronchial asthma in humans. In other studies conducted on both humans and dogs, acupuncture was found to be beneficial in cases in which surgery was not recommended, and in cases where analgesics and anti-inflammatory medications had dem-



onstrated side effects or had been ineffective.

- 1) Cervical pain and wobbler’s syndrome: GB-20/21, SI-3, LI-4, BL-10, BL-62, LI-16/17/18
- 2) Intervertebrae disc diseases and back pain: BL-23/26/40/60/67, LIV-3, BL-10/11, Bai-hui
- 3) Degenerative Joint Disease and arthritis: BL-11/23/26/60, KID-3/7/10, GB-34/39
- 4) Laminitis/Navicular disease: TH-1/15, Qi-ti-men, PC-9, LU-11, LI-1, SI-3/9, BL-11, GB-21
- 5) Colic and abdominal pain: Jiang-ya, TH-1, Dai-mai, ST-2, BL-21/25, ST-36, LIV-3
- 6) Post-operative pain management: Bai-hui, SI-9, TH-9, LI-4, GB-34, LIV-3
- 7) ‘Tying up’: BL-18/19, BL-21/22, BL-23/26, BL-40, BL-67, LIV-1, GB-21/44

### 2. Geriatric medicine

- DJD, hip dysplasia, IVDD: BL-11/23/40/60, Bai-hui, Hua-tuo-jia-ji
- Chronic renal failure: BL-23, KID-3/7/10, BL-21, ST-36, Shan-gen
- Congested heart failure: BL-14, BL-15, HT-7, An-shen
- Oncological disease: ST-36, LI-4/10/11, GV-14
- Chronic GI disorders & IBD: ST-36, GB-34, BL-20/21, Wei-jian
- Immune-mediated disease and dermatological problems: GB-20, Da-feng-men, BL-17, SP-10, LI-4, ST-36, GV-14
- Infertility: Yan-chi, BL-23/52/26, GV-1, Bai-hui
- Seizure disorders: GB-20, LIV-3, GV-1, BL-18
- General weakness: KID-1, PC-8, LI-10, ST-36, GB-34
- Vestibular diseases, degenerative myelopathy: Da-feng-men, Tian-men, GV-14, Wei-jian, Bai-hui

### 3. Sports medicine

- Evaluation of lameness: LI-18 for hoof pain; BL-54, Lu-gu and GB-29 for coxo-femoral soreness
- Treatment of musculo-skeletal soreness: Local points + BL-21, BL-40, LIV-1, ST-45, TH-1

(Continued on page 4)

(Continued from page 3)

- Enhancement of performance: BL-21, BL-26, Qi-hai-shu, Yan-chi, Dan-tian

As compared with other modalities of therapy, acupuncture is much safer because of dual-direction regulation. This means that when an acupoint is stimulated, the physiological response will be according to the body's need. For instance, GV-26 is an excellent point to be used in a patient experiencing cardiovascular shock because it raises blood pressure, respiratory rate and heart rate. However, the same point GV-26 is often used in cases of hypertension, where the physiological response is to lower blood pressure. Yet another example of dual-direction regulation can be demonstrated through the use of two acupoints (BL 21, GV 1). These two points address gastrointestinal motility and are used either for the patient who is constipated or another who has diarrhea.

## Contraindication and Cautions

### 1. Contraindication

- Never needle directly into a tumor or open wound
- Never needle CV-8. Only moxibustion is used at CV-8
- Never use the following acupoints during pregnancy: ST-36, SP-6, BL-40, BL-60 and BL-67, as well as points around the lumbar and lower abdominal region.
- Never use electro-acupuncture for seizure patients.
- Never use hemo-acupuncture for weak or elderly patients.

### 2. Cautions

- Use fewer acupoints for weak or elder animals;
- Wait a couple of hours after training/racing before a treatment session
- Acupoints around the thoracic cavity such as BL-13 to

BL-17, require shorter insertion of needles

- Be cautious when using Moxibustion in summer time
- Be cautious when using hemo-acupuncture in winter time
- Be cautious when using points around the eyes
- Be cautious when using electro-acupuncture in patients with pace makers.

### Reference:

1. Yu, C. 1995. *Traditional Chinese Veterinary Acupuncture and Moxibustion*. p1-4. China Agriculture Press, Beijing.
2. Li KC. *Electro-acupuncture for treatment of lameness in horses*. *Chinese Journal of Traditional Veterinary Science* 1993; 1: 13-14. (In Chinese).
3. Steiss JE, White NA, Bowen JM. *Electro-acupuncture in the treatment of chronic lameness in horses and ponies: a controlled clinical trial*. *Canadian Journal of Veterinary Research* 1989; 53: 239-243.
4. Still, J. 1989. *Analgesic effects of acupuncture in thoracolumbar disc disease in dogs*. *Journal of Small Animal Practice*. (30): 298-301.
5. Pu, Z.G., J.Z. Wang, Y.B. Jin, Z.Y. Pu; Z.W. Zhang. 1984. *Electro-acupuncture analgesia in dogs*. *Chinese Journal of Veterinary Medicine*. (7): 41. (In Chinese).
6. Xie H, Asquith RL, Kivipelto J. *A review of the use of acupuncture for treatment of equine back pain*. *Journal of Equine Veterinary Science* 1996; 7: 285-290.
7. Zhou GL. *Electro-acupuncture for treatment of 8 equine cases with colic*. *Chinese Journal of Traditional Veterinary Science* 1992; 1: 44. (In Chinese).
8. Bossut DFB, Page EH, Stromberg MW. *Production cutaneous analgesia by electro-acupuncture in horses: variations dependent on sex of subject and locus of stimulation*. *American Journal of Veterinary Research* 1984; 4: 620-625.
9. Xie, H., E.A. Ott, J.D. Harkins, T. Tobin and P.T. Colahan. *Influence of electroacupuncture stimulation on pain threshold in horses and its mode of actions*. *Journal of Equine Vet Science in press*. 2001
10. Xie, H., EA Ott, Patrick Colahan: *Influence of Acupuncture on Experimental Lameness in Horses*. *AAEP Proceedings, AAEP, San Diego, California, Nov 24 to 28 2001*, 47: 347-357, 2001

# News of the Chi Institute

## Chi Scholarship

Chi Institute offers \$10,000 scholarship for veterinary students to learn acupuncture. Junior and senior students are welcomed to apply for the scholarship by participating in the TCVM Contest. Go to [www.tcvm.com](http://www.tcvm.com) for details.

## New Training Programs

Chi Institute is developing three new training programs:

- TCVM Food Therapy; (Page 7)
- Small Animal TCVM Diagnostics, Classical Points and Advanced Acupuncture Techniques; (Page 5)
- Equine TCVM Diagnostics, Classical points and advanced acupuncture techniques. (Page 5)

## Herbology Introduction is Now on DVD

A module of Introduction to Chinese Herbal Medicines (5 C.E. hours) is required for all students who are enrolled in the *TCVM Clinical Approach / Chinese Herbology* program and

have not taken any Chinese herbal courses. ***This module is now offered on DVD and can be purchased (800-891-1986) for \$100, or \$80 for students who have already taken the Intro Module and would like a copy for review.*** The student may watch and prepare for all 6 lectures on the DVD at home before each module of the herbology program.

## New Qi

Ziyu (Mark) Qian was appointed as the President Assistant on Sep 2, 2005. Mark is a new graduate of the University of Florida MBA program. He has rich experience in training, management and marketing.

## Veterinary Acupuncture Brochures are Now Available

In response to many student requests, the Chi Institute developed "FAQ for Veterinary Acupuncture", a promotional flyer designed to help you market your TCVM business. This flyer is created to facilitate your clients' understanding so that they can feel comfortable and confident when you include TCVM in your treatment plan. This flyer can be purchased in blocks of 50 for \$15 at 800-891-1986.



# TCVM Diagnostics, Classical Points and Advanced Acupuncture Techniques

— a new advanced veterinary acupuncture training course

*Are you challenged when needing a point? Are you comfortable with your acupuncture techniques? Do you feel difficulty with TCVM diagnosis? Veterinarians who have completed Basic Acupuncture Training are highly recommended to take this program to enhance their TCVM diagnosis and skills. Two different sessions are available for equine and small animal practitioners specifically.*

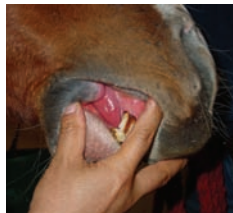
This training program covers three of the most important TCVM studies: TCVM Diagnosis, Classical Acupoints and Advanced Acupuncture Techniques. Two different sessions are available for equine and small animal practitioners respectively. Each session is 3 days long and with 24 C.E. hours approved by RACE/State.

## TCVM Diagnostic skills



In any medical system, effective treatment of disease hinges upon accurate, complete diagnoses, all of which is referred to as *Bian Zheng*, the diagnostic system of TCVM. *Bian*, which is differentiation and identification, and *Zheng*, which is a type or pattern of illness, together indicate that the TCVM diagnostic system relies upon pattern differentiation. Therefore, a correct TCVM diagnosis and effective treatment depend upon the practitioner's ability to analyze a patient's symptoms and to identify the *Zheng* (pattern of illness).

How to observe and palpate an actual patient is the most important part of the TCVM diagnosis. As you know TCVM diagnostics can be challenging. Therefore, this program will provide a unique opportunity for students to practice TCVM diagnostic skills including tongue and pulse reading in live small animal and equine cases.



## Classical Acupoints



Acupuncture has been practiced in both animals and human beings for thousands of years in China. The earliest equine acupuncture book "bo le zhen jing" (Bole's Canon of Veterinary Acupuncture) is believed to have been written by Dr. Bo Le in Qin-mu-gong period (659 B.C. to 621 B.C.). Equine treatment protocols using acupuncture were well documented in this textbook. Since then, acupuncture remains a significant part of mainstream veterinary medical care in China.

Acupuncture may be defined as the stimulation of a specific point on the body with a specific method, resulting in a therapeutic homeostatic effect. The specific point on the body is

called "Shu-xue" or acupoint. The ancient Chinese people discovered 361 acupoints in human beings, 173 acupoints in horses, and 70 acupoints in dogs and cats. These points that were discovered in ancient times are called "Classical Points".

## Advanced Acupuncture Techniques



Acupuncture methods including auricular acupuncture, electro-acupuncture, needling techniques, needling points around difficult locations (eyes, feet, abdomen etc), aqua-acupuncture, gold implantation, pneumo-acupuncture, hemo-acupuncture and moxibustion will be demonstrated in the wet-lab.

## Features of This Class

- Major Speaker: Huisheng Xie, DVM PhD, Bruce Ferguson, DVM, MS, CVA, CVH
- Wet-lab with new special sections on needling techniques, electroacupuncture, moxibustion and more.
- Limited seats, more hands-on learning; free case consultations for students

## Schedule, Agenda and Tuition

Small Animal Session: Jan 19 - 21, 2006 Tuition: \$700		
Agenda	8:30 --12:00	1:30 -- 5:30
Day 1	How to find classical points in head & neck	Wet Lab: Advanced Acupuncture Techniques
Day 2	How to find classical points in trunk and limbs	Wet Lab: K9 & Fel Tongue and Pulse
Day 3	Diagnostic Approach to the Small Animal Patient	Wet Lab: Live K9 – Feline Case Workups

Equine Session: March 2 - 4, 2006 Tuition: \$800		
Agenda	8:30 --12:00	1:30 -- 5:30
Day 1	How to find classical points in head & neck	Wet Lab: Advanced Acupuncture Techniques
Day 2	How to find classical points in trunk and limbs	Wet Lab: Tongue & Pulse Lab
Day 3	Wet Lab: Equine Live Case Studies	Wet Lab: Equine Live Case Studies

## New Jing Tang Formulas are available in Teapills

Dr. Xie's Jing Tang dedicates itself to developing more and more herbal products as TCVM practitioners demand. Nine more commonly used formulas, listed as below, have been manufactured in teapill format for small animals.

- ◆ **Cervical Formula (B2140):** Cervical stiffness, cervical injuries, cervical Qi and blood stagnation, wiry or tight pulse, and purple tongue.
- ◆ **Epimedium Powder (A0190):** Poor growth and development, impotence, lower sexual activities, female infertility, Kidney Yang Deficiency, Kidney Jing Deficiency, stallion infertility, poor quality of sperm, low quantity of sperm, female infertility, weak and deep pulse, pale and swollen tongue.
- ◆ **External Wind (E2042):** Skin allergy, skin itching and scratching, hyper-sensitive skin. Red or purple tongue, superficial and fast pulse.
- ◆ **Hindquarter Formula (A2090):** Hindquarter weakness, sore, weak back. Kidney Qi + Yin Deficiency, dry skin, thirsty, rear weakness, general weakness, very deep, thready and weak pulse, red and dry or pale and wet tongue.
- ◆ **Max's Formula (B2022):** Lumps, fatty tumors, nodules, skin masses in old or weak animals. Blood stagnation/stasis, swelling or nodules of the local glands or internal organs, weak pulse, pale tongue.
- ◆ **Rehmannia 11 (A2194):** Diabetes. Kindey Qi/Yin Deficiency, hirsutism, chronic/recurrent laminitis, polyuria and polydipsia, deep and weak pulse, pale, purple and wet tongue.
- ◆ **Rehmannia 14 (A0150):** Cushing's disease, hypothyroidism, diabetes. Kidney Yang Deficiency, hirsutism, chronic/recurrent laminitis, polyuria and polydipsia, deep and weak pulse, pale, purple and wet tongue.
- ◆ **Tendon/Ligament (A2050):** Weakness or poor growth of tendon and ligament, chronic tendonitis, tore tendon, mechanical damage to tendons. Liver Yin with Blood Deficiency, dry eyes, pain of tendons, poor growth or weakness of tendon, cracked hooves/paws, thready and weak pulse, dry without coating.
- ◆ **Wind Toxin (E2041):** Pruritus or skin itching. Skin itching and scratching, restlessness, skin itching due to Wind-Heat or Wind toxin, red or purple tongue, superficial and fast pulse.

Other herbal formulas available in teapill include: Body Sore (B0020), Shen Calmer (G0040), Suo Quan Wan (A2110), Wei Qi Booster (A2010), Stasis Breaker (B2020), Dok's Formula (C2031), Coix Formula (C2032), Di Gu Pi (C2034), Damp Heat Skin (E2043), Happy Earth (D2060) and Di Tan Tang (H2412).

## Jing Tang formula in use: *Guan Zhong San*

— by Cynthia Marsh

This formula was developed to expel gastrointestinal worms including strongyles and tapeworms, roundworms, hookworms and pinworms. I believe in holistic medicine and wanted to try something "alternative" to get rid of the tapeworms.

I used a 200g container, administered 0.5g per 10lb. of body weight to 2 dogs: a 130lb. Great Dane and a 55lb. mixed breed dog. I mixed the powder with their dry dog food, adding a little bit of corn oil. Both dogs liked the taste of this formula, making administration of the formula very convenient.



*Elke, 130 pound, 4 years old*

After 22 days, no tapeworms were found in either of the dog's stools. My Great Dane had a chronic problem with tapeworms since she was young, but since I have used the Guan Zhong San, she has had no reoccurrence of tapeworms.



## CHI 2006 CALENDAR

- Small Animal TCVM Diagnostics, Classical Points and Advanced Acupuncture Techniques  
Jan 19 to 21, 2006 **New!**
- Small Animal Acupuncture  
Feb 2 to 5, 2006
- TCVM Clinical Approach/Herbology: Liver & endocrinology  
Feb 16 to 19, 2006
- Equine TCVM Diagnostics, Classical Points and Advanced Acupuncture Techniques  
Mar 2 to 4, 2006 **New!**
- Small Animal Acupuncture  
Mar 30 to Apr 2, 2006
- TCVM Clinical Approach/Herbology: Dermatology/Tumor  
April 6 to 9, 2006
- West Coast Herbology Seminar  
April 27 to 30, 2006
- 8th TCVM Annual Conference & China Trip 2006  
May 8 to May 21, 2006
- Small Animal Acupuncture  
June 1 to 4, 2006
- Equine / Mixed Practice Acupuncture  
July 27 to 30, 2006
- Small Animal Acupuncture  
Aug 10 to 14, 2006
- TCVM Clinical Approach/Herbology: Gastrointestinal Disorders  
Aug 24 to 27, 2006
- Equine / Mixed Practice Acupuncture  
Sep 14 to 17, 2006
- TCVM Clinical Approach/Herbology: Respiratory/Cardiovascular Diseases  
Oct 12 to 15, 2006
- Equine / Mixed Practice Acupuncture  
Oct 26 to 29, 2006
- Veterinary Food Therapy **New!**  
Nov 2 to Nov 5, 2006
- Veterinary Tui-na  
Nov 16 to Nov 19, 2006
- TCVM Clinical Approach/Herbology: Reproductive/Bi/Kidney  
Nov 30 to Dec 3, 2006
- Equine / Mixed Practice Acupuncture  
Dec 7 to 11, 2005



## Post-Conference Tour Itinerary

The 8th TCVM Annual Conference will be hosted in Beijing, China from May 9th to 12th, 2006. An 8-day fantastic post-conference tour will be led by Dr. Xie. The itinerary of tour is provided below. Let's go to China with Dr. Xie and colleges and be immersed in the great Chinese Culture! For more information, please visit [www.tcvm.com](http://www.tcvm.com), call Allen at 800-891-1986 ext.100 or email [allen@tcvm.com](mailto:allen@tcvm.com) for the information package of this conference.

- ◆ **5/8:** Being picked up at Beijing Airport. Welcome dinner.
- ◆ **5/9-5/12:** TCVM Conference. A Beijing Tour will be arranged for doctors' family members and friends.
- ◆ **5/13:** Fly to Chengdu, "Storehouse of Heaven" from its fertile land and agricultural wealthy. Visit Panda Reserve. Watch face changing show at night.
- ◆ **5/14:** Fly to Jiu Zhai Gou and Yellow Dragon. Jiu Zhai Gou is an integration of multi-layer waterfalls, green lakes, snow mountains and forests with Tibetan culture & customs.
- ◆ **5/15:** Bus tour in Jiu Zhai Gou.
- ◆ **5/16:** Visit Tibetan family. Explore and experience the Tibetan culture.
- ◆ **5/17:** Fly back to Chengdu. Visit herbal garden and pharmacy. Enjoy herbal dinner and Sichuan Opera at night.
- ◆ **5/18:** Fly to Beijing. Visit Tiananmen Square, Forbidden city and watch acrobatic show.
- ◆ **5/19:** Tour at Great Wall and legendary Ming Tombs of 13 emperors. Enjoy famous Peking Duck at dinner.
- ◆ **5/20:** Group shopping/individual tour at Beijing.
- ◆ **5/21:** After breakfast, leave Beijing for the U.S.

## New TCVM Program: Veterinary Food Therapy

— Health is Wealth! Good food recommendation is a new approach to take care of your clients.

### Introduction of Food Therapy

Food Therapy is one of the five branches of Traditional Chinese Medicine (TCM). It is a practice of healing using natural foods along with or instead of medications. The Yellow Emperor's Classic of Internal Medicine (Huang-di-ni-jing, written around 300 BC) was most important in forming the basis of Chinese food therapy. It classified food by Yin and Yang food group and five tastes and by their natures and characteristics.



For example, Yang foods are believed to warm Yang, tonify Qi, dispel Cold, move Qi and Blood, resolve stagnation, stop pain. Yin foods nourish Yin, cool blood, clear heat, detoxify. Therefore, Yang foods (e.g., mutton and pumpkin) are used for Qi/Yang Deficiency, Qi-blood stagnation, wei syndrome, Lin syndrome, immunodeficiency. Yin Foods (such as turkey and tofu) are used for the treatment of Yin Deficiency, skin itching, autoimmune diseases, Cushing's disease.

Food Therapy is the preparation of using selected food ingredients and superior herbs. Each recipe was developed under the supervision of TCVM theory (Yin-yang, Five Elements, Eight Principles and Zang-fu physiology and pathology) and is designed to treat specific health conditions. The recipes can be classified into the following categories:

1. Health Promotion and Prevention — to improve health on a regular basis and to prevent seasonal climate related problems.
2. Disease Treatment — to treat many clinical conditions including skin problems.
3. Adjunct Therapy — to complement the primary treatment to treat diseases including otitis, urinary crystals & stones, UTI, IBD, CHF, cancer, renal failure and liver failure.

### Prerequisites of Registration

**All students must complete following lectures to be qualified for the enrollment of the Food Therapy program.**

1. TCVM Fundamental Theories (Yin Yang, Five Elements and Eight Principles): 4-hour lecture, a part of Veterinary Acupuncture program, also offered on DVD for \$100.
2. Herbal Introduction: 6-hour lecture, a part of TCVM Herbology program, also offered on DVD for \$100.

Veterinary Food Therapy: Nov 2-5, 2006 Tuition: \$900		
Agenda	8:30 --12:30 AM	2:00 -- 6:00 PM
Day 1	Introduction to Food Therapy	Food therapy for pediatric and geriatric patients
Day 2	Food therapy for GI, Liver and endocrine Disorders	Food therapy lab
Day 3	Food therapy for skin, cancer patients and immune-mediated diseases	Food therapy lab
Day 4	Food therapy for Lung, heart, renal problems, Wei and Bi syndromes	Ends at 12:30 pm



Call 800-891-1986 now to secure your seat in the 8th TCVM Annual Conference/China Trip 2006.

## Chi Institute of Chinese Medicine

Tel: 800-891-1986

Fax: 866-700-8772

Website: [www.tcvm.com](http://www.tcvm.com)

Email: [barbara@tcvm.com](mailto:barbara@tcvm.com)

## Letter from Barbara

Dearest Chi Students,

As many of know from our website flashes, we are quickly filling our courses to capacity. We had to close the Mixed/Equine, Tui-na, and the Conference classes well in advance because all seats were filled, with waiting lists for each. It came as quite a surprise to us that some students made non-refundable travel plans before registering, because in the "old days" it was safe to be casual about it. Of course in our hospitable Chi fashion, we are including them for these sessions even though we are over-booked!

So the bottom line message here is that we have grown so much that you can no longer count on late registrations, or showing up at the door the day of the class, because there are more and more graduates who want to participate in advanced studies, and we are always watchful to protect our signature quality that we work so hard to cultivate. So ... once you are certain of a class you wish to attend, please register early and confirm it with a registration form.

Now what if you register early and then, Life Happens? It's OK. Just don't forget to

let us know that you changed plans, for there's a good chance someone wants your seat! And don't worry, your tuition will be credited toward your next class.

Of course, you all know how much I love hearing from you and I invite you to call me to pre-register for any class, but for administrative purposes and procedures, I *really* do need the back-up paperwork. This also gives you a chance to update your contact information, and provides me with what I need to run credit cards and double check files. (Especially in the event of human or computer mix-ups).

You can easily download a registration form and register for a class, I also can fax or mail it to you, whatever's most convenient. Please know that the Chi staff is devoted to supporting you in whatever way we can to bring forth more and more TCVM into your veterinary world, so you can enjoy much prosperity and the wellbeing that comes from doing the work you love.

Namaste,

Barbara Lowell

### CONTRIBUTORS OF THIS ISSUE:

- Shen Xie, DVM, PHD
- Shura Bugreeff DVM
- Barbara Lowell
- Mark Qian, MBA
- Cynthia Marsh

EDITOR: Zhen Zhao, MS



*Barbara Lowell, Student Administrator of the Chi Institute*



Chi Institute of Chinese Medicine  
9700 W. Highway 318  
Reddick, FL 32686

Presorted STD  
U.S. Postage  
PAID  
Great Falls, MT  
Permit No. 237